

阿尔茨海默病 (Alzheimer's disease, AD)

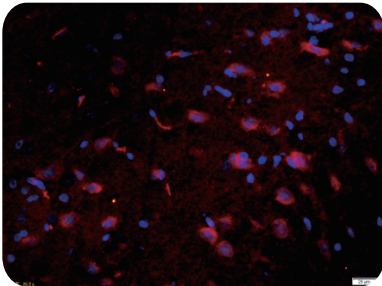
又称原发性老年痴呆症，是一种神经系统退行性疾病，是痴呆症中最常见的一种类型，约有50%~70%的痴呆症属于此类痴呆。AD症的主要临床表现为以渐进性记忆障碍、认知功能障碍、行为障碍及日常生活能力下降等。病理学特征征为大脑中细胞外老年斑 (senile plaque, SP)、细胞内神经纤维缠结 (neurofibrillary tangles, NFTs) 以及中枢胆碱能神经元大量死亡及丢失。

近年来，针对 AD 的发病机制，在早期的胆碱能神经元假说、A β 毒性假说和 Tau 蛋白假说等基础上，研究相对较少的炎症假说、胰岛素假说、氧化不平衡假说和基因突变假说也越来越受关注。AD 的具体发病机制目前尚未完全研究透彻，只是存在多种假说，包括胆碱能神经元假说、A β 毒性假说、Tau 蛋白假说、胰岛素假说、自由基损伤假说等。然而，AD 是由遗传因素和环境因素共同引发的一种复杂性疾病，单一的假说并不能解释 AD 的全部发病特征。

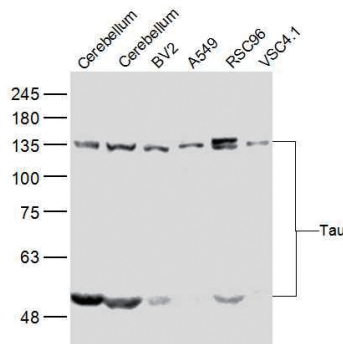
Bioss 自 2001 年成立以来一直致力于科研抗体的研发、生产、销售，已研发出大量的神经科学研究领域的优质抗体，其中包括 AD 症相关抗体抗体百余种。此外，Bioss 还提供 23 种不同标记物的抗体，如：HRP, AP, Biotin, PE, APC, precp, Cy3, Cy5, Cy7, Alexa Fluor 647, Alexa Fluor 488, Alexa Fluor 555, Alexa Fluor 495 等 **直标抗体**，为广大科研工作者提供优质的产品 & 周到的服务，为生命科学助力！

Anti-Tau antibody

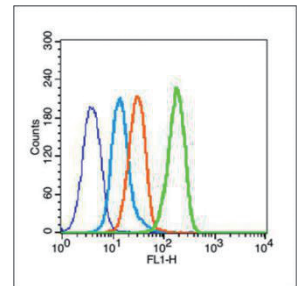
bs-0157R



ICC | Brain | Rat



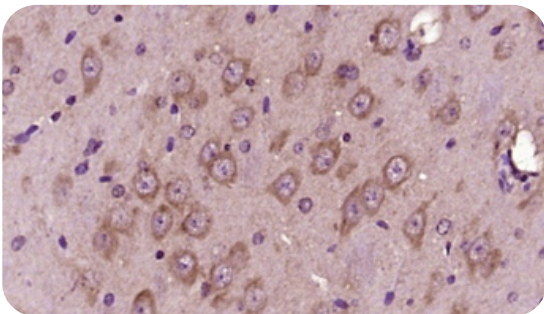
WB



FC | MCF7 | Human

Anti-beta-Amyloid 1-40 (CT)

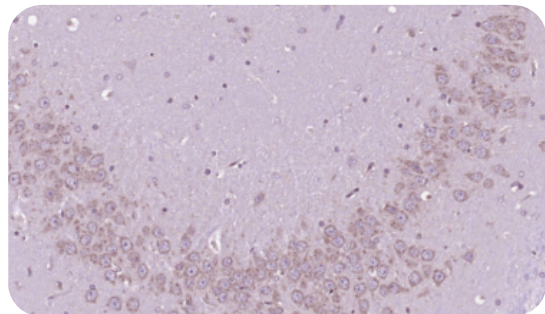
bs-0877R



IHC | Brain | Mouse

Anti-ChAT antibody

bs-0042R



IHC | Brain | Rat

AD相关抗体

Target	SKU	Species	Application	Target	SKU	Species	Application
beta Amyloid 1-42	bs-0107R	Rt	IHC-P, IHC-F, ICC, IF, FCM	Glutamine synthetase	bs-4143R	Hu	WB, IHC-P, IHC-F, ICC, IF, FCM
beta-Amyloid 1-42 (CT)	bs-0076M	Rt	IHC-P, IHC-F, ICC, IF	Alpha-1-Antichymotrypsin	bs-0094R	Mo, Rt	WB, IHC-P, IHC-F, ICC, IF
beta-Amyloid 1-40 (CT)	bs-0877R	Mo, Rt	IHC-P, IHC-F, ICC, IF, FCM	AMPK alpha 1	bs-1115R	Hu, Mo, Rt	WB, IHC-P, IHC-F, ICC, IF, FCM
Amyloid Precursor Protein	bs-0112R	Hu, Mo, Rt	WB, IHC-P, IHC-F, ICC, IF	AMPK alpha 2	bs-2771R	Hu, Rt	WB, IHC-P, IHC-F, ICC, IF
Amyloid Precursor Protein	bs-0347R	Mo, Rt	WB	AMPK alpha-1	bsm-33236M	Mo, Rt	IHC-P, IHC-F, ICC, IF
p-Amyloid Precursor Protein (S730)	bs-5168R	Mo, Rt	IHC-P, IHC-F, ICC, IF, FCM	AMPK alpha-1	bsm-33338M	Hu, Mo	WB, IHC-P, IHC-F, ICC, IF
Tau	bsm-33332M	Hu, Mo, Rt	WB, IHC-P, IHC-F, IF, ICC	p-AMPK alpha-2 (T172)	bs-4002R	Hu, Mo, Rt, Shp	WB, IHC-P, IHC-F, ICC, IF, FCM
Tau	bs-0157R	Hu, Mo, Rt	WB, IHC-P, IHC-F, IF, ICC, FCM	p-AMPK alpha 1 (S356)	bs-14318R	Hu, Mo	WB, IHC-P, IHC-F, ICC, IF
phospho-Tau Protein(Thr181)	bs-23383R	Hu	WB, IHC-P, IHC-F, IF, ICC	p-AMPK alpha 1 (S487)	bs-12972R	Mo	IHC-P, IHC-F, ICC, IF
p-Tau (S202)	bs-11240R	Hu, Mo, Rt	IHC-P, IHC-F, IF, ICC, FCM	p-AMPK alpha 1 (S496)	bs-13401R	Rt	WB, IHC-P, IHC-F, ICC, IF
p-Tau (S404)	bs-2392R	Hu, Mo, Rt	IHC-P, IHC-F, IF, ICC	p-AMPK alpha 1 (S496)	bs-13402R	Hu	WB, IHC-P, IHC-F, ICC, IF
p-Tau (S396)	bs-3446R	Hu, Mo, Rt	IHC-P, IHC-F, IF, ICC	p-AMPK alpha-1 (S496+S502)	bs-3025R	Mo, Rt	IHC-P, IHC-F, ICC, IF, FCM
Apolipoprotein E	bs-4892R	Hu, Mo, Rt	WB, IHC-P, IHC-F, ICC, IF	p-AMPK alpha-1 (T183)	bs-5551R	Hu, Mo, Rt	WB, IHC-P, IHC-F, ICC, IF, FCM
Apolipoprotein E4	bs-5038R	Hu, Mo, Rt	WB, IHC-P, IHC-F, ICC, IF	p-AMPK alpha-1 (S184)	bs-10666R	Rt	IHC-P, IHC-F, ICC, IF
presenilin 1	bs-0024R	Hu, Mo, Rt	WB, IHC-P, IHC-F, IF, ICC, FCM	Heme Oxygenase 1	bs-2075R	Hu, Mo, Rt, Pg	WB, IHC-P, IHC-F, ICC, IF, FCM
Presenilin 1+2	bs-11681R	Hu, Mo, Rt	WB, IHC-P, IHC-F, ICC, IF	Nogo B	bs-1315R	Hu, Mo	WB, IHC-P, IHC-F, ICC, IF, FCM
APH1a	bs-4259R	Hu, Rt	IHC-P, IHC-F, ICC, IF, FCM	Nogo A	bs-0134R	Hu, Mo, Rt	IHC-P, IHC-F, ICC, IF, FCM
ChAT	bs-0042R	Hu, Mo, Rt, Dg	IHC-P, IHC-F, IF, ICC	PPP1R10	bs-11666R	Hu, Mo, Rt	WB, IHC-P, IHC-F, ICC, IF
ChAT	bs-20628R	Hu, Mo, Rt	IHC-P, IHC-F, IF, ICC	LRP1	bs-2677R	Hu, Mo	IHC-P, IHC-F, ICC, IF, FCM
BACE1	bs-0164R	Hu, Mo, Rt	WB, IHC-P, IHC-F, ICC, IF	GAB2	bs-2885R	Hu, Mo, Rt	IHC-P, IHC-F, ICC, IF, FCM
p-BACE1 (S498)	bs-10192R	Hu, Mo, Rt	WB, IHC-P, IHC-F, ICC, IF	ECE2	bs-1753R	Hu, Mo, Rt	WB, IHC-P, IHC-F, ICC, IF
alpha-Synuclein	bs-0009R	Hu, Mo, Rt	IHC-P, IHC-F, IF, ICC, FCM	GSK3 Alpha + Beta	bs-7332R	Rt	IHC-P, IHC-F, ICC, IF
alpha + beta Synuclein	bs-11787R	Hu, Rt	IHC-P, IHC-F, ICC, IF	CLACP	bs-11643R	Mo, Rt	IHC-P, IHC-F, ICC, IF
p-Alpha synuclein (S129)	bs-23384R	Hu, Mo, Rt	WB, IHC-P, IHC-F, ICC, IF	SLK	bs-3519R	Hu, Mo	WB, IHC-P, IHC-F, ICC, IF
gamma Synuclein	bs-0622R	Rt	IHC-P, IHC-F, ICC, IF	Serine racemase	bs-10474R	Hu, Mo, Rt	WB, IHC-P, IHC-F, ICC, IF
Diazepam Binding Inhibitor	bs-11658R	Mo	IHC-P, IHC-F, ICC, IF	PXMP1/PMP70	bs-8584R	Hu	IHC-P, IHC-F, ICC, IF
PLD3	bs-12717R	Mo	WB	TMEM59L	bs-11648R	Hu	WB
QPRT/QAPRTase	bs-20316R	Mo, Rt	WB, IHC-P, IHC-F, ICC, IF	PICALM	bs-11665R	Rt	IHC-P, IHC-F, ICC, IF
				UBXD2	bs-11675R	Hu, Mo, Rt	WB, IHC-P, IHC-F, ICC, IF

