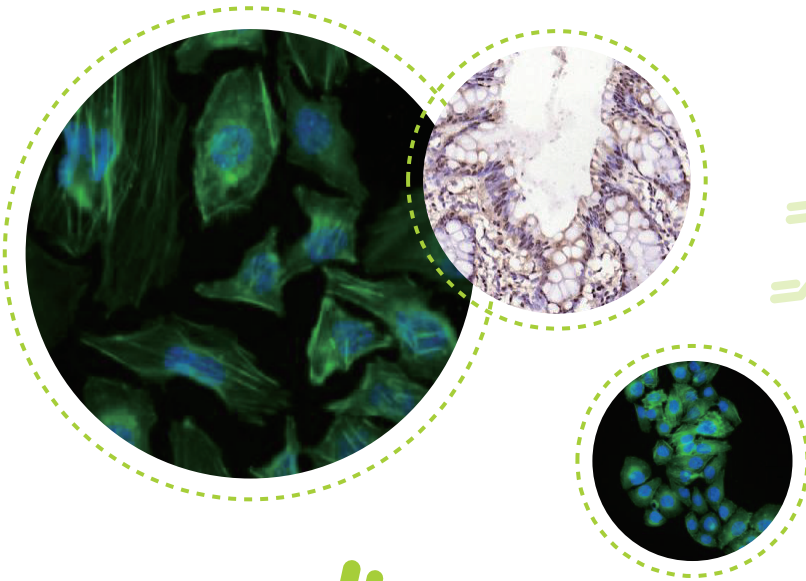


# 内参 \ 标记内参 \ 标签 \ 标记标签

高 特异性    高 稀释度

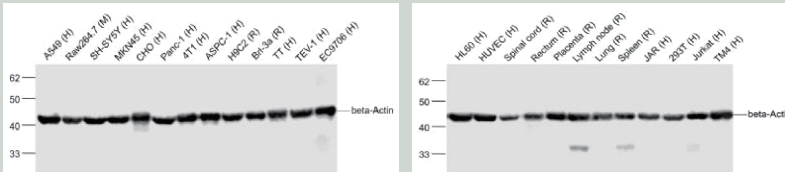
功能严格验证，结果轻松呈现

## 产品手册

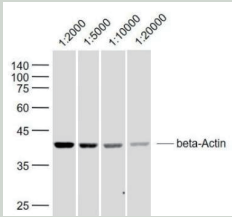


# 内参抗体

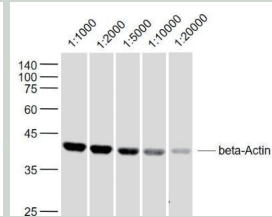
## $\beta$ -Actin Rabbit pAb (bs-0061R)



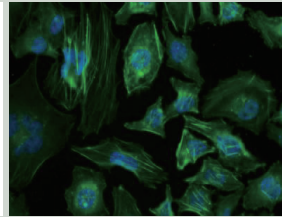
经测试应用适用于: WB, IHC, ICC  
 种属反应性: Human, Mouse, Rat  
 稀释比例:  
 WB=1:5000-20000  
 IHC=1:100-500  
 ICC=1:100



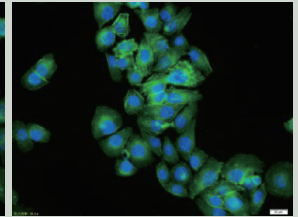
SH-SY5Y



Thymus (Mouse)

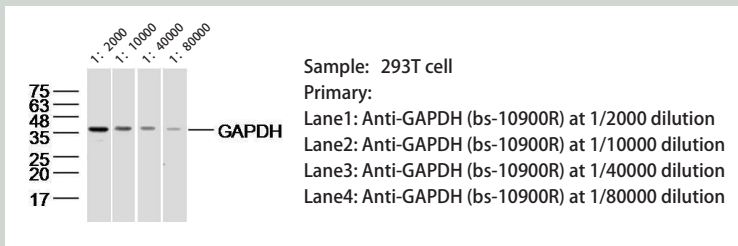


HeLa cell

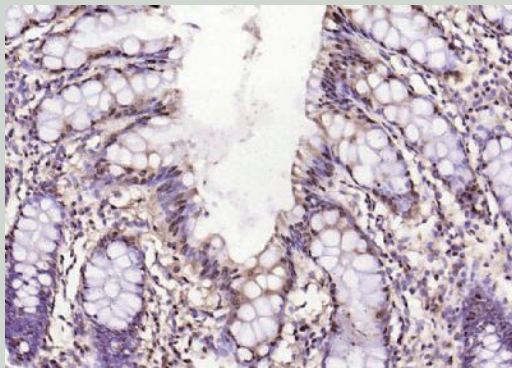


MCF7 cell

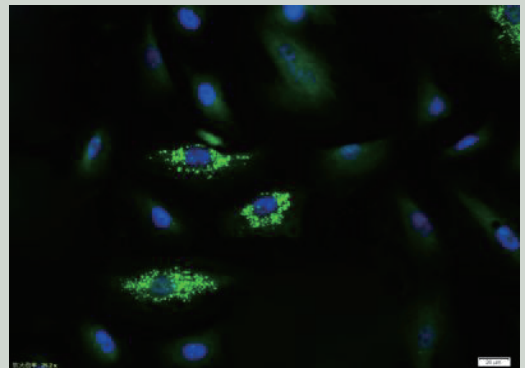
## GAPDH Rabbit pAb (bs-10900R)



经测试应用适用于: WB, IHC, ICC  
 种属反应性: Human, Mouse, Rat  
 稀释比例:  
 WB=1:5000-20000  
 IHC=1:100-500  
 ICC=1:100



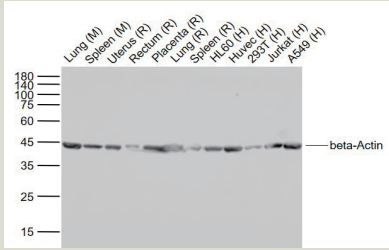
Human colon



A549 cell

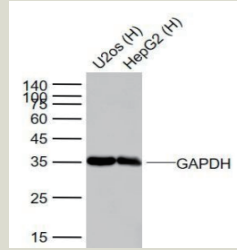
## 标记内参抗体

### HRP-conjugated $\beta$ -Actin Rabbit pAb (bs-0061R-HRP)



应用种属: Human, Mouse, Rat WB=1:20000

### HRP-conjugated GAPDH Rabbit pAb (bs-10900R-HRP)



应用种属: Human, Mouse, Rat WB=1:20000

## 内参、标记内参抗体列表

### 胞质 (包浆或全细胞)

名称	未标记	抗体类型	交叉反应	应用 & 稀释比例	标记物								
					生物素	HRP	荧光素						
beta I Tubulin	bsm-33041M	Monoclonal	Hu Mo Rt	WB=1:5000-20000 IHC=1:100-500 FC=1:100-500 ICC=1:100-500 IF=1:100-500	Biotin	HRP	PE	FITC	AF488	AF594	AF647	Cy3	Cy5
	bsm-33034M	Monoclonal	Hu Mo Rt	WB=1:5000-20000 IHC=1:100-500 ICC=1:100-500 IF=1:200-500	Biotin	HRP	PE	FITC	AF488	AF594	AF647	Cy3	Cy5
beta Tubulin	bs-4511R	Polyclonal	Hu Mo Rt	WB=1:5000-20000 IHC=1:100-500 FC=1ug/Test ICC=1:100 IF=1:100-500	Biotin	HRP	PE	FITC	AF488	AF594	AF647	Cy3	Cy5
beta Actin	bsm-33036M	Monoclonal	Hu Mo Rt	WB=1:5000-20000 IHC=1:200-1000 ICC=1:200-1000 IF=1:200-500	Biotin	HRP	PE	FITC	AF488	AF594	AF647	Cy3	Cy5
	bs-8783R	Polyclonal	YEAST	WB=1:500-2000	Biotin	HRP	PE	FITC	AF488	AF594	AF647	Cy3	Cy5
	bs-0061R	Polyclonal	Hu Mo Rt	WB=1:5000-20000 IHC=1:500-1000 FC=1 $\mu$ g/Test ICC=1:100	Biotin	HRP	PE	FITC	AF488	AF594	AF647	Cy3	Cy5
GAPDH	bs-10900R	Polyclonal	Hu Mo Rt	WB=1:5000-20000 IHC=1:100-500 ICC=1:100 IF=1:100-500	Biotin	HRP	PE	FITC	AF488	AF594	AF647	Cy3	Cy5
	bs-2188R	Polyclonal	Hu Mo Rt	WB=1:2000-10000 IHC=1:100-500 IF=1:100-500	Biotin	HRP	PE	FITC	AF488	AF594	AF647	Cy3	Cy5
	bsm-0978M	Monoclonal	Hu Mo Rt	WB=1:1000-5000 IHC=1:100-500 ICC=1:100 IF=1:100-500	Biotin	HRP	PE	FITC	AF488	AF594	AF647	Cy3	Cy5
	bs-8778R	Polyclonal	YEAST	WB=1:500-2000	Biotin	HRP	PE	FITC	AF488	AF594	AF647	Cy3	Cy5
	bs-8789R	Polyclonal	YEAST	WB=1:500-2000	Biotin	HRP	PE	FITC	AF488	AF594	AF647	Cy3	Cy5
	bsm-33033M	Monoclonal	Hu Mo Rt Pg	WB=1:5000-20000 IHC=1:100-500 ICC=1:100	Biotin	HRP	PE	FITC	AF488	AF594	AF647	Cy3	Cy5

名称	未标记	抗体类型	交叉反应	应用 & 稀释比例	标记物								
					生物素	HRP	荧光素						
alpha Tubulin	bs-20496R	Polyclonal	Hu Mo Rt	WB=1:500-2000 IHC=1:100-500 ICC=1:100-500 IF=1:100-500	Biotin	HRP	PE	FITC	AF488	AF594	AF647	Cy3	Cy5
	bs-8785R	Polyclonal	Fruit Fly	WB=1:500-2000	Biotin	HRP	PE	FITC	AF488	AF594	AF647	Cy3	Cy5
	bs-0159R	Polyclonal	Hu Mo Rt	WB=1:2000-5000 FC=1 μg/Test	Biotin	HRP	PE	FITC	AF488	AF594	AF647	Cy3	Cy5
Vinculin	bsm-54148R	Monoclonal	Hu Mo Rt	WB=1:500-2000 IP=1:10-50 ICC=1:50-200 IF=1:50-200	---								
Cyclophilin B	bsm-33228M	Monoclonal	Hu Mo Rt	WB=1:500-1000	Biotin	HRP	PE	FITC	AF488	AF594	AF647	Cy3	Cy5
	bsm-52473R	Monoclonal	Hu Mo Rt	WB=1:500-1000 IHC=1:400-800	---								

## 核蛋白

名称	未标记	抗体类型	交叉反应	应用 & 稀释比例	标记物								
					生物素	HRP	荧光素						
Histone H3	bs-0349R	Polyclonal	Hu Mo Rt	WB=1:1000-2000 IHC=1:100-500 FC=1 μg/Test ICC=1:100 IF=1:100-500	Biotin	HRP	PE	FITC	AF488	AF594	AF647	Cy3	Cy5
	bsm-33042M	Monoclonal	Hu Mo Rt	WB=1:1000-5000 IHC=1:100-500 IF=1:100-500	Biotin	HRP	PE	FITC	AF489	AF595	AF648	Cy4	Cy6
Lamin B	bs-23709R	Polyclonal	Mo Rt	WB=1:500-2000	Biotin	HRP	PE	FITC	AF490	AF596	AF649	Cy5	Cy7
	bsm-33040M	Monoclonal	Human	WB=1:500-1000	Biotin	HRP	PE	FITC	AF491	AF597	AF650	Cy6	Cy8
PCNA	bs-0754R	Polyclonal	Hu Mo Rt	WB=1:500-2000 IHC=1:100-500 IF=1:100-500	Biotin	HRP	PE	FITC	AF488	AF594	AF647	Cy3	Cy5
	bsm-52347R	Monoclonal	Hu Mo Rt	WB=1:500-2000 IP=1:10-50 IHC=1:100-500 ICC=1:50-200 IF=1:100-500	---								
	bsm-33035M	Monoclonal	Hu Mo Rt	WB=1:500-2000 IHC=1:100-500	Biotin	HRP	PE	FITC	AF488	AF594	AF647	Cy3	Cy5
TATA binding protein TBP/TFIID	bsm-33227M	Monoclonal	Hu Rt	WB=1:500-1000 IHC=1:100-500 ICC=1:100-500 IF=1:100-500	Biotin	HRP	PE	FITC	AF488	AF594	AF647	Cy3	Cy5
YY1	bsm-51566M	Monoclonal	Hu Rt Fish Monkey Zf	WB=1:500-1000 IHC=1:25-50	---								
	bsm-52349R	Monoclonal	Hu Mo	WB=1:500-2000 IP=1:20-100 IHC=1:50-200 FC=1 μg/Test ICC=1:50-200 IF=1:50-200	---								
HDAC1	bs-1414R	Polyclonal	Hu Mo	WB=1:500-2000 IHC=1:100-500 FC=1:50-300 IF=1:100-500	Biotin	HRP	PE	FITC	AF488	AF594	AF647	Cy3	Cy5
	bsm-52080R	Monoclonal	Hu Mo	WB=1:500-2000 IHC=1:50-200 ICC=1:50-200 IF=1:50-200	---								

## 膜蛋白

名称	未标记	抗体类型	交叉反应	应用 & 稀释比例	标记物								
					生物素		HRP		荧光素				
ATPase Na+/K+ beta 2 (ATPB2)	bs-1152R	Polyclonal	Hu Mo	WB=1:500-2000 IHC=1:100-500 ICC=1:100-500 IF=1:100-500	Biotin	HRP	PE	FITC	AF488	AF594	AF647	Cy3	Cy5
	bs-23414R	Polyclonal	Hu Mo	WB=1:500-2000	Biotin	HRP	PE	FITC	AF488	AF594	AF647	Cy3	Cy5

## 质膜

名称	未标记	抗体类型	交叉反应	应用 & 稀释比例	标记物								
					生物素		HRP		荧光素				
ATP1A1 (Sodium Potassium ATPase)	bs-4255R	Polyclonal	Hu Mo	WB=1:500-2000	Biotin	HRP	PE	FITC	AF488	AF594	AF647	Cy3	Cy5
	bsm-52485R	Monoclonal	Hu Mo Rt	WB=1:500-2000 IHC=1:50-100 FC=1:50 ICC=1:50 IF=1:50-100	Biotin	HRP	PE	FITC	AF489	AF595	AF648	Cy4	Cy6

## 线粒体

名称	未标记	抗体类型	交叉反应	应用 & 稀释比例	标记物								
					生物素		HRP		荧光素				
COX4	bsm-33037M	Monoclonal	Hu Mo Rt	WB=1:500-2000 IHC=1:100-500 ICC=1:100-500 IF=1:200-800	Biotin	HRP	PE	FITC	AF488	AF594	AF647	Cy3	Cy5
VDAC1	bs-1461R	Polyclonal	Hu Rt	WB=1:500-2000 IHC=1:100-500 IF=1:100-500	Biotin	HRP	PE	FITC	AF488	AF594	AF647	Cy3	Cy5
	bsm-52251R	Monoclonal	Hu Mo Rt	WB=1:500-2000 IHC=1:400-800	---								

## 全血/血浆/血清

名称	未标记	抗体类型	交叉反应	应用 & 稀释比例	标记物								
					生物素		HRP		荧光素				
Transferrin	bsm-33243M	Monoclonal	Hu Rt	WB=1:500-1000 IHC=1:100-500	Biotin	HRP	PE	FITC	AF488	AF594	AF647	Cy3	Cy5
	bs-2052R	Polyclonal	Hu Mo Rt Gt	WB=1:1000-3000	Biotin	HRP	PE	FITC	AF488	AF594	AF647	Cy3	Cy5
Albumin	bsm-0945M	Monoclonal	Hu Mo	WB=1:500-2000 IHC=1:100-500 IF=1:100-500	Biotin	HRP	PE	FITC	AF488	AF594	AF647	Cy3	Cy5
	bs-0945R	Polyclonal	Hu Mo Rt Gt	WB=1:500-2000 IHC=1:100-500 IF=1:100-500	Biotin	HRP	PE	FITC	AF488	AF594	AF647	Cy3	Cy5

## 细胞增殖标志物

名称	未标记	抗体类型	交叉反应	应用 & 稀释比例	标记物								
					生物素	HRP	荧光素						
BrdU	bsm-0917M	Monoclonal	Hu Rt	IHC=1:100-500 ICC=1:100 IF=1:100-500	Biotin	HRP	PE	FITC	AF488	AF594	AF647	Cy3	Cy5
	bs-0489R	Polyclonal	Hu	IHC=1:100-500 IF=1:100-500	Biotin	HRP	PE	FITC	AF488	AF594	AF647	Cy3	Cy5

## 植物内参

名称	未标记	抗体类型	交叉反应	应用 & 稀释比例	标记物								
					生物素	HRP	荧光素						
Plant actin	bsm-33128M	Monoclonal	Plant	WB=1:2000-10000	Biotin	HRP	PE	FITC	AF488	AF594	AF647	Cy3	Cy5

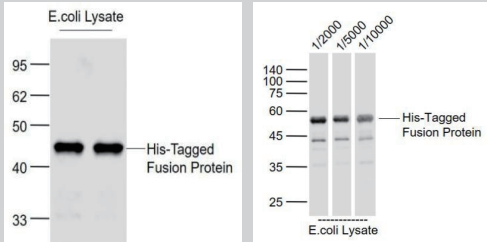
## 线虫内参

名称	未标记	抗体类型	交叉反应	应用 & 稀释比例	标记物								
					生物素	HRP	荧光素						
Beta Actin	bs-8770R	Polyclonal	Caenorhabditis Elegans	WB=1:500-2000	Biotin	HRP	PE	FITC	AF488	AF594	AF647	Cy3	Cy5
	bsm-8770M	Monoclonal	Caenorhabditis Elegans	WB=1:500-2000	Biotin	HRP	PE	FITC	AF488	AF594	AF647	Cy3	Cy5
GAPDH	bs-8771R	Polyclonal	Caenorhabditis Elegans	WB=1:500-2000	Biotin	HRP	PE	FITC	AF488	AF594	AF647	Cy3	Cy5
	bsm-8771M	Monoclonal	Caenorhabditis Elegans	WB=1:500-2000	Biotin	HRP	PE	FITC	AF488	AF594	AF647	Cy3	Cy5
Tubulin- alpha	bs-8772R	Polyclonal	Caenorhabditis Elegans	WB=1:500-2000	Biotin	HRP	PE	FITC	AF488	AF594	AF647	Cy3	Cy5
	bsm-8772M	Monoclonal	Caenorhabditis Elegans	WB=1:500-2000	Biotin	HRP	PE	FITC	AF488	AF594	AF647	Cy3	Cy5
Tubulin-beta	bsm-8773M	Monoclonal	Caenorhabditis Elegans	WB=1:500-2000	Biotin	HRP	PE	FITC	AF488	AF594	AF647	Cy3	Cy5
	bsm-8788M	Monoclonal	YEAST	WB=1:500-2000	Biotin	HRP	PE	FITC	AF488	AF594	AF647	Cy3	Cy5
	bs-8773R	Polyclonal	Caenorhabditis Elegans	WB=1:500-2000	Biotin	HRP	PE	FITC	AF488	AF594	AF647	Cy3	Cy5
Histone H3	bsm-8775M	Monoclonal	Caenorhabditis Elegans	WB=1:500-2000	Biotin	HRP	PE	FITC	AF488	AF594	AF647	Cy3	Cy5
Actin (Fruit Fly, Loading Control)	bsm-8777M	Monoclonal	Fruit Fly	WB=1:500-2000	Biotin	HRP	PE	FITC	AF488	AF594	AF647	Cy3	Cy5

\* 产品信息以官网为准

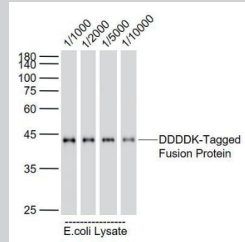
## 标签抗体

### His-Tag Mouse mAb (bsm-33004M)



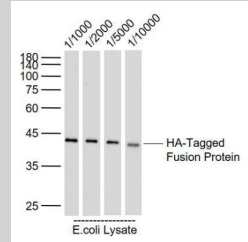
WB稀释度1: 1000至 1: 10000

### Flag-Tag Mouse mAb (bsm-33346M)



WB稀释度1: 1000至 1: 10000

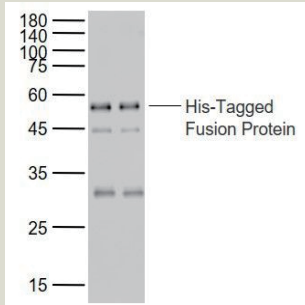
### HA-Tag Mouse mAb (bsm-33157M)



WB稀释度1: 1000至 1: 10000

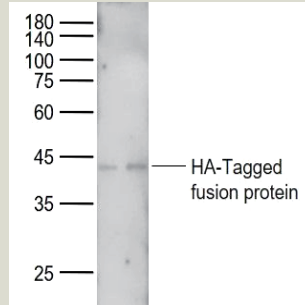
## 标记标签抗体

### HRP-conjugated His-Tag Mouse mAb (bsm-33004M-HRP)



WB稀释度1: 10000

### HRP-conjugated HA-Tag Mouse mAb (bsm-33157M-HRP)



WB稀释度1: 100000

## 标签、标记标签抗体列表

名称	未标记	抗体类型	交叉反应	应用 & 稀释比例	生物素	HRP	荧光素						
FLAG-Tag	bs-0879R	Polyclonal	Recombinant protein	WB=1:1000-5000	Biotin	HRP	PE	FITC	AF488	AF594	AF647	Cy3	Cy5
	bs-0965R	Polyclonal	Recombinant protein	WB=1:1000-2000	Biotin	HRP	PE	FITC	AF488	AF594	AF647	Cy3	Cy5
	bs-10583R	Polyclonal	FLAG Tag Fusion Protein	WB=1:500-2000 ELISA=1:5000-10000	Biotin	HRP	PE	FITC	AF488	AF594	AF647	Cy3	Cy5
	bsm-33346M	Monoclonal	Recombinant protein	WB=1:5000-20000 ELISA=1:5000-10000 IP=1:20-100 IF=1:100-500	Biotin	HRP	PE	FITC	AF488	AF594	AF647	Cy3	Cy5

名称	未标记	抗体类型	交叉反应	应用 & 稀释比例	生物素	HRP	荧光素						
GFP-Tag	bsm-33019M	Monoclonal	Recombinant protein	WB=1:50000-500000	Biotin	HRP	PE	FITC	AF488	AF594	AF647	Cy3	Cy5
	bsm-33130M	Monoclonal	Recombinant protein	WB=1:5000-20000 ELISA=1:5000-20000 ICC=1:100-500 IF=1:100-500	Biotin	HRP	PE	FITC	AF488	AF594	AF647	Cy3	Cy5
	bsm-51005M	Monoclonal	Recombinant protein	WB=1:5000-20000 ELISA=1:5000-20000 IF=1:20-200	---	---							
	bs-0639R	Polyclonal	Recombinant protein	WB=1:20000-50000 IF=1:100-500	Biotin	HRP	PE	FITC	AF488	AF594	AF647	Cy3	Cy5
	bs-0890R	Polyclonal	predicted: Belt Jellyfish, protein	WB=1:1000-10000 IHC=1:100-500 IF=1:100-500	Biotin	HRP	PE	FITC	AF488	AF594	AF647	Cy3	Cy5
GST-Tag	bs-2122R	Polyclonal	Recombinant protein	WB=1:20000-60000 ELISA=1:5000-10000	Biotin	HRP	PE	FITC	AF488	AF594	AF647	Cy3	Cy5
	bsm-33007M	Monoclonal	Recombinant protein	WB=1:30000-100000 ELISA=1:5000-10000	Biotin	HRP	PE	FITC	AF488	AF594	AF647	Cy3	Cy5
HA-Tag	bs-0966R	Polyclonal	Recombinant protein	WB=1:10000-30000 ELISA=1:5000-10000	Biotin	HRP	PE	FITC	AF488	AF594	AF647	Cy3	Cy5
	bsm-0966M	Monoclonal	Recombinant protein	WB=1:5000-50000 ELISA=1:5000-10000	Biotin	HRP	PE	FITC	AF488	AF594	AF647	Cy3	Cy5
	bsm-33003M	Monoclonal	Recombinant protein	WB=1:10000-100000 ELISA=1:5000-10000	Biotin	HRP	PE	FITC	AF488	AF594	AF647	Cy3	Cy5
	bsm-33157M	Monoclonal	Recombinant protein	WB=1:10000-100000	Biotin	HRP	PE	FITC	AF488	AF594	AF647	Cy3	Cy5
His-Tag	bs-0287R	Polyclonal	Recombinant protein	WB=1:1000-5000	Biotin	HRP	PE	FITC	AF488	AF594	AF647	Cy3	Cy5
	bs-10582R	Polyclonal	Recombinant protein	WB=1:2000-5000	Biotin	HRP	PE	FITC	AF488	AF594	AF647	Cy3	Cy5
	bsm-0287M	Monoclonal	Recombinant protein	WB=1:1000-5000	Biotin	HRP	PE	FITC	AF488	AF594	AF647	Cy3	Cy5
	bsm-33004M	Monoclonal	Recombinant protein	WB=1:5000-10000 IP=1:200-1000	Biotin	HRP	PE	FITC	AF488	AF594	AF647	Cy3	Cy5
EGFP-Tag	bs-2194R	Polyclonal	Recombinant protein	WB=1:1000-10000 ELISA=1:5000-10000	Biotin	HRP	PE	FITC	AF488	AF594	AF647	Cy3	Cy5
Myc-Tag	bs-0842R	Polyclonal	Recombinant protein	WB=1:1000-5000 ELISA=1:5000-10000 IHC=1:100-500 IF=1:100-500	Biotin	HRP	PE	FITC	AF488	AF594	AF647	Cy3	Cy5
	bsm-51003M	Monoclonal	Recombinant protein	WB=1:1000-5000	---	---							
	bs-23166R	Polyclonal	Recombinant protein	WB=1:1000-10000 ELISA=1:5000-10000 IHC=1:100-500 ICC=1:100-500 IF=1:100-500	Biotin	HRP	PE	FITC	AF488	AF594	AF647	Cy3	Cy5
	bsm-33024M	Monoclonal	Recombinant protein	WB=1:100-5000 ELISA=1:5000-10000 IP=1:20-100 ICC=1:100-500 IF=1:100-500	Biotin	HRP	PE	FITC	AF488	AF594	AF647	Cy3	Cy5



名称	未偶联	抗体类型	交叉反应	应用 & 稀释比例	生物素	HRP	荧光素						
Nano-Tag (15)	bs-23474R	Polyclonal	Recombinant protein	WB=1:1000-2000	Biotin	HRP	PE	FITC	AF488	AF594	AF647	Cy3	Cy5
Nano-Tag (9)	bsm-33215M	Monoclonal	Recombinant protein	WB=1:1000-10000	Biotin	HRP	PE	FITC	AF488	AF594	AF647	Cy3	Cy5
RFP-Tag	bsm-33011M	Monoclonal	Recombinant protein	WB=1:1000-5000 ELISA=1:1000-5000	---	---	---	---	---	---	---	---	---
	bsm-52995R	Monoclonal	Recombinant protein	WB=1:500-2000	Biotin	HRP	PE	FITC	AF488	AF594	AF647	Cy3	Cy5
S1-Tag	bs-33206R	Polyclonal	S1-Tag,Fusion Protein	WB=1:1000-5000 ELISA=1:5000-10000	Biotin	HRP	PE	FITC	AF488	AF594	AF647	Cy3	Cy5
S-Tag	bs-33017R	Polyclonal	Recombinant protein	WB=1:1000-5000 ELISA=1:5000-10000	Biotin	HRP	PE	FITC	AF488	AF594	AF647	Cy3	Cy5
Strep-Tag II	bs-33016R	Polyclonal	Strep-Tag,Fusion Protein	WB=1:500-2000	Biotin	HRP	PE	FITC	AF488	AF594	AF647	Cy3	Cy5
	bsm-33166M	Monoclonal	Strep-Tag, Fusion Protein	WB=1:200-500 ELISA=1:5000-10000	Biotin	HRP	PE	FITC	AF488	AF594	AF647	Cy3	Cy5
	bsm-33016M	Monoclonal	Recombinant protein	WB=1:1000-5000 ELISA=1:5000-10000	Biotin	HRP	PE	FITC	AF488	AF594	AF647	Cy3	Cy5
Glu-Glu-Tag	bs-2115R	Polyclonal	Recombinant protein	WB=1:1000-5000 ELISA=1:5000-10000	Biotin	HRP	PE	FITC	AF488	AF594	AF647	Cy3	Cy5
T7-Tag	bsm-33012M	Monoclonal	Recombinant protein	WB=1:1000-5000 ELISA=1:5000-10000	Biotin	HRP	PE	FITC	AF488	AF594	AF647	Cy3	Cy5
TAP-Tag	bsm-33133M	Monoclonal	Recombinant protein	WB=1:1000-5000 ELISA=1:5000-10000	Biotin	HRP	PE	FITC	AF488	AF594	AF647	Cy3	Cy5
V5-Tag	bs-2109R	Polyclonal	Recombinant protein	WB=1:1000-5000 ELISA=1:5000-10000	Biotin	HRP	PE	FITC	AF488	AF594	AF647	Cy3	Cy5
	bsm-33005M	Monoclonal	Recombinant protein	WB=1:1000-5000 ELISA=1:5000-10000	Biotin	HRP	PE	FITC	AF488	AF594	AF647	Cy3	Cy5
VP16-Tag	bs-2111R	Polyclonal	Human herpesvirus 1,Fusion Protein	WB=1:1000-5000 ELISA=1:5000-10000	Biotin	HRP	PE	FITC	AF488	AF594	AF647	Cy3	Cy5
VSV-G-Tag	bs-2110R	Polyclonal	Recombinant protein	WB=1:1000-5000 ELISA=1:5000-10000	Biotin	HRP	PE	FITC	AF488	AF594	AF647	Cy3	Cy5
	bsm-33006M	Monoclonal	VSV-G tagged protein	WB=1:1000-5000 ELISA=1:5000-10000	Biotin	HRP	PE	FITC	AF488	AF594	AF647	Cy3	Cy5

名称	未偶联	抗体类型	交叉反应	应用 & 稀释比例	生物素	HRP	荧光素						
Thioredoxin/Trx-Tag	bsm-33018M	Monoclonal	Recombinant protein	WB=1:1000-5000 ELISA=1:5000-10000	Biotin	HRP	PE	FITC	AF488	AF594	AF647	Cy3	Cy5
	bs-0458R	Polyclonal	Human, Mouse, Rat, (predicted: Dog, Pig, Cow, Horse, Rabbit, fusion protein)	WB=1:1000-5000 ELISA=1:5000-10000 IHC=1:100-500 IF=1:100-500	Biotin	HRP	PE	FITC	AF488	AF594	AF647	Cy3	Cy5
AmCyan-Tag	bsm-33184M	Monoclonal	Recombinant protein	WB=1:1000-5000 ELISA=1:5000-10000	Biotin	HRP	PE	FITC	AF488	AF594	AF647	Cy3	Cy5
AU5-Tag	bs-2113R	Polyclonal	Recombinant protein	WB=1:1000-5000 ELISA=1:5000-10000	Biotin	HRP	PE	FITC	AF488	AF594	AF647	Cy3	Cy5
Avi-Tag	bsm-33164M	Monoclonal	Recombinant protein	WB=1:1000-5000 ELISA=1:5000-10000	Biotin	HRP	PE	FITC	AF488	AF594	AF647	Cy3	Cy5
	bs-23294R	Polyclonal	Recombinant protein	WB=1:500-2000 ELISA=1:5000-10000	Biotin	HRP	PE	FITC	AF488	AF594	AF647	Cy3	Cy5
CBP-Tag	bsm-33132M	Monoclonal	CBP tagged proteins	WB=1:1000-5000 ELISA=1:5000-10000	Biotin	HRP	PE	FITC	AF488	AF594	AF647	Cy3	Cy5
	bs-23293R	Polyclonal	Recombinant protein	WB=1:1000-5000 ELISA=1:5000-10000	Biotin	HRP	PE	FITC	AF488	AF594	AF647	Cy3	Cy5
E-Tag	bs-2116R	Polyclonal	Recombinant protein	WB=1:1000-5000 ELISA=1:5000-10000	Biotin	HRP	PE	FITC	AF488	AF594	AF647	Cy3	Cy5
E2-Tag	bs-2071R	Polyclonal	Recombinant protein	WB=1:1000-5000 ELISA=1:5000-10000	Biotin	HRP	PE	FITC	AF488	AF594	AF647	Cy3	Cy5
EBFP-Tag	bsm-33185M	Monoclonal	Recombinant protein	WB=1:1000-5000 ELISA=1:5000-10000	Biotin	HRP	PE	FITC	AF488	AF594	AF647	Cy3	Cy5
ECFP-Tag	bsm-33189M	Monoclonal	Recombinant protein	WB=1:1000-5000	Biotin	HRP	PE	FITC	AF488	AF594	AF647	Cy3	Cy5
EYFP-Tag	bsm-33182M	Monoclonal	Recombinant protein	WB=1:1000-5000 ELISA=1:5000-10000	Biotin	HRP	PE	FITC	AF488	AF594	AF647	Cy3	Cy5
HSV-Tag	bs-20157R	Polyclonal	Recombinant protein	WB=1:1000-5000 ELISA=1:5000-10000	Biotin	HRP	PE	FITC	AF488	AF594	AF647	Cy3	Cy5
	bs-23287R	Polyclonal	Recombinant protein	WB=1:1000-5000 ELISA=1:5000-10000	Biotin	HRP	PE	FITC	AF488	AF594	AF647	Cy3	Cy5
	bsm-33119M	Monoclonal	Recombinant protein	WB=1:1000-5000 ELISA=1:5000-10000	Biotin	HRP	PE	FITC	AF488	AF594	AF647	Cy3	Cy5

名称	未偶联	抗体类型	交叉反应	应用 & 稀释比例	生物素	HRP	荧光素						
KT3-Tag	bs-2112R	Polyclonal	Recombinant protein	WB=1:1000-5000 ELISA=1:5000-10000	Biotin	HRP	PE	FITC	AF488	AF594	AF647	Cy3	Cy5
	bs-23288R	Polyclonal	Recombinant protein	WB=1:1000-5000 ELISA=1:5000-10000	Biotin	HRP	PE	FITC	AF488	AF594	AF647	Cy3	Cy5
	bsm-33015M	Monoclonal	Recombinant protein	WB=1:1000-5000 ELISA=1:5000-10000	Biotin	HRP	PE	FITC	AF488	AF594	AF647	Cy3	Cy5
mCherry-Tag	bsm-33131M	Monoclonal	Recombinant protein	WB=1:1000-5000	Biotin	HRP	PE	FITC	AF488	AF594	AF647	Cy3	Cy5
	bs-41161R	Polyclonal	Recombinant protein	WB=1:1000-5000	---	---	---						
mOrange-Tag	bsm-33183M	Monoclonal	mOrange-Tag, fusion protein	WB=1:1000-5000 ELISA=1:5000-10000	Biotin	HRP	PE	FITC	AF488	AF594	AF647	Cy3	Cy5
mStrawberry-Tag	bsm-33175M	Monoclonal	Recombinant protein	WB=1:1000-5000 ELISA=1:5000-10000	Biotin	HRP	PE	FITC	AF488	AF594	AF647	Cy3	Cy5
MBP tag	bs-2967R	Polyclonal	Recombinant protein	WB=1:500-2000 ELISA=1:5000-10000 IHC=1:100-500 IF=1:100-500	Biotin	HRP	PE	FITC	AF488	AF594	AF647	Cy3	Cy5
	bsm-33008M	Monoclonal	Recombinant protein	WB=1:1000-5000 ELISA=1:5000-10000 IHC=1:100-500 ICC=1:100-500 IF=1:100-500	Biotin	HRP	PE	FITC	AF488	AF594	AF647	Cy3	Cy5
Firefly Luciferase	bsm-33318M	Monoclonal	Recombinant protein	WB=1:500-5000	Biotin	HRP	PE	FITC	AF488	AF594	AF647	Cy3	Cy5
Sodium Potassium ATPase (Loading Control)	bsm-34014M	Monoclonal	Recombinant protein	WB=1:2000-10000 ELISA=1:5000-10000 IP=1:20-100 IHC=1:50-500 IF=1:50-500	Biotin	HRP	PE	FITC	AF488	AF594	AF647	Cy3	Cy5

\* 产品信息以官网为准



扫描二维码 关注Bioss

## 北京博奥森生物技术有限公司

BEIJING BIOSYNTHESIS BIOTECHNOLOGY CO., LTD.

■ [www.bioss.com.cn](http://www.bioss.com.cn) ☎ 400-901-9800

📍 北京市通州区马驹桥镇景盛南四街联东U谷西区2号院67号楼

